

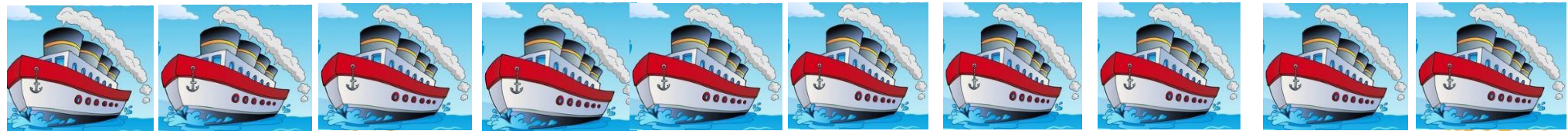
"Cruising the Sea for Members!"

DISTRICT	# of Units	Goal	Period Gain	Membership To Date	Percent of Goal	Membership Last Year	Difference from Last Year
One	47	3,762	219	1,783	47.40%	2173	390
Two	71	3,890	310	1,951	50.15%	1987	36
Three	46	3,882	28	1,813	46.70%	2161	348
Four	7	579	12	278	48.01%	277	-1
Five	7	522	16	154	29.50%	263	109
Six	61	5,031	254	2,967	58.97%	2888	-79
Seven	53	2,955	362	1,552	52.52%	1352	-200
Eight	19	1,185	49	648	54.68%	645	-3
Nine	46	3,348	94	1,686	50.36%	1948	262
Ten	42	3,812	195	1,833	48.08%	1925	92
1982 Dept	1	404	9	208	51.49%	178	-30
District Totals:	400	29,370	1,548	14,873	50.64%	15797	924
11/7/2022							
Group 1 (Even) <i>Robin Dorf</i>	200	14,497	820	7,677	52.96%	7,722	45
Group 2 (Odd) <i>Judy Ackerman</i>	199	14,469	719	6,988	48.30%	7,897	909



RANKING

1st 58.97%	2nd 54.68%	3rd 52.52%	4th 50.36%	5th 50.15%	6th 48.08%	7th 48.01%	8th 47.40%	9th 46.70%	10th 29.50%
District #6	District #8	District #7	District #9	District #2	District #10	District #4	District #1	District #3	District #5



	#	Unit Name	2024 DNO	2024 Period Gain Juniors	2024 Period Gain Seniors	2024 PUFL Members	2024 Paid Online Juniors	2024 Paid Online Seniors	Period Gain Totals	Juniors To Date	Seniors To Date	To Date Totals	Percent	DNO/Date	ATH	Year
1	9	Winona	125						0		12	12	9.60%		502	1949
1	40	Lanesboro	96						0		7	7	7.29%		120	1985
1	50	Wabasha	104		8			1	9	2	83	85	81.73%		289	1999
1	52	Blooming Prairie	93					1	1	1	54	55	59.14%		131	2011
1	56	Albert Lea	266		17				17		149	149	56.02%		772	1987
1	68	Spring Valley	47		4				4	4	34	38	80.85%		213	1948
1	75	New Richland	42						0		3	3	7.14%		223	1976
1	77	Owatonna	104		1				1		56	56	53.85%		399	1978
1	81	Harmony	54						0		2	2	3.70%		110	1989
1	90	Lewiston	36						0			0	0.00%		110	1991
1	91	Austin	123		39				39		45	45	36.59%		454	1982
1	92	Rochester	131					1	1	3	73	76	58.02%		443	1996
1	94	Rushford	47						0		34	34	72.34%		132	1984
1	105	Lyle	53						0	6	14	20	37.74%		123	1979
1	110	Lake City	71						0		2	2	2.82%		165	1955
1	119	Byron	23						0		13	13	56.52%		178	1997
1	140	Grand Meadow	67		13				13	5	43	48	71.64%		135	1984
1	146	Adams	131				3	5	8	9	76	85	64.89%		195	2004
1	161	LeRoy	50						0	3	14	17	34.00%		116	1957
1	164	Stewartville	165		8				8	2	119	121	73.33%		249	2001
1	179	Plainview	128					53	53		61	61	47.66%		215	2010
1	190	St Charles	12					1	1		4	4	33.33%		213	1988
1	191	Caledonia	72					1	1	3	50	53	73.61%		207	1977
1	197	Chatfield	27						0		1	1	3.70%		105	1964
1	228	Waseca	226						0	3	114	117	51.77%		316	2001
1	249	Spring Grove	95						0	2	34	36	37.89%		240	1963
1	264	Glenville	97						0	6	45	51	52.58%		132	1987
1	295	West Concord	34						0		1	1	2.94%		94	1948
1	299	Mabel	121						0	5	55	60	49.59%		150	2009
1	330	Hayfield	176						0	1	9	10	5.68%		268	2007
1	333	Kasson	143					1	1	1	77	78	54.55%		298	1997
1	369	Wykoff	20						0		17	17	85.00%		59	1963
1	384	Dodge Center	58	6	29				35	6	34	40	68.97%		137	1960
1	404	Alden	43					1	1		1	1	2.33%		90	1984
1	422	Claremont	22						0		3	3	13.64%		66	1949
1	423	Houston	117		12				12	4	96	100	85.47%		189	1974
1	498	Hokah	19						0		4	4	21.05%		56	1951
1	526	Peterson	50						0	1	27	28	56.00%		45	2020
1	544	Ostrander	13						0			0	0.00%		47	1982

1	551	Eyota	103				1	1	1	47	48	46.60%		162	1995
1	552	Freeborn	59					0	6	42	48	81.36%		78	1984
1	573	Elgin	15					0		1	1	6.67%		81	1972
1	579	Milville	46		6			6		27	27	58.70%		77	1981
1	587	Waldorf	20					0			0	0.00%		49	1956
1	588	Mazeppa	38		7			7	1	25	26	68.42%		80	1997
1	595	La Crescent	161					0		87	87	54.04%		383	2004
1	637	Whalan	19					0		13	13	68.42%		41	2007
47		1st District Totals	3762	6	144	0	3	66	219	75	1,708	1,783	47.40%		

2ND DISTRICT

	#	Unit Name	2024 DNO	2024 Period Gain Juniors	2024 Period Gain Seniors	2024 PUFL Members	2024 Paid Online Juniors	2024 Paid Online Seniors	Period Gain Totals	Juniors To Date	Seniors To Date	To Date Totals	Percent	DNO/Date	ATH	Year
2	4	Lakefield	55						0		6	6	10.91%		138	1986
2	6	Pipestone	54						0		33	33	61.11%		344	1965
2	7	Sleepy Eye	30						0		17	17	56.67%		264	1947
2	10	Lake Benton	47						0		17	17	36.17%		134	2008
2	11	Mankato	60						0	3	41	44	73.33%		412	1955
2	19	Madelia	60						0	1	41	42	70.00%		66	1984
2	32	Adrian	45						0	2	23	25	55.56%		47	2018
2	33	St James	69		30				30		33	33	47.83%		200	1994
2	36	Fairmont	117						0	1	62	63	53.85%		390	2001
2	38	Redwood Falls	66		15				15		21	21	31.82%		214	1950
2	41	Lamberton	106						0	1	51	52	49.06%		145	2012
2	42	Edgerton	40						0		7	7	17.50%		88	1999
2	64	Slayton	51		16				16		27	27	52.94%		118	1961
2	82	Winnebago	23						0		5	5	21.74%		134	1960
2	89	Blue Earth	106		9			1	10		55	55	51.89%		318	1984
2	115	Truman	34						0		6	6	17.65%		161	1998
2	123	Luverne	39						0		6	6	15.38%		197	1954
2	130	Jackson	138						0	3	60	63	45.65%		238	2007
2	132	New Ulm	168		58				58		65	65	38.69%		316	1991
2	133	Jasper	31						0		17	17	54.84%		79	1957
2	165	Bricelyn	50	1	6			1	8	2	22	24	48.00%		78	1949
2	195	Hendricks	33		1				1		1	1	3.03%		67	1972
2	196	Ellsworth	19		16				16		16	16	84.21%		25	2003
2	206	Windom	55						0	2	33	35	63.64%		266	1985
2	210	Wells	163					1	1		57	57	34.97%		346	1984
2	224	Heron Lake	37						0		19	19	51.35%		70	1947
2	244	Comfrey	32						0	2	28	30	93.75%		82	1925
2	257	Springfield	154	1	42				43	1	99	100	64.94%		264	1984
2	263	Wabasso	91	1	9				10	10	55	65	71.43%		92	2020
2	267	Walnut Grove	79	1	17				18	5	70	75	94.94%		72	1978
2	269	Madison Lake	33						0			0	0.00%		38	2018
2	274	Milroy	32						0		7	7	21.88%		71	1976
2	276	Amboy	36						0	3	22	25	69.44%		147	1981
2	285	Lake Wilson	100						0		1	1	1.00%		135	2015
2	286	Sanborn	40						0	5	24	29	72.50%		80	2003
2	287	Minnesota Lake	76						0	5	42	47	61.84%		106	2003
2	294	Lake Crystal	146						0	7	96	103	70.55%		160	2008

2	306	Vesta	15					0		10	10	66.67%		45	1966
2	309	Belview	41					0	1	18	19	46.34%		82	1985
2	318	Fulda	33					0		19	19	57.58%		95	1976
2	322	Currie	62					0	4	24	28	45.16%		105	2007
2	329	Cambria	15					0		11	11	73.33%		34	1949
2	338	Chandler	27					0	1	21	22	81.48%		50	1972
2	356	Sherburn	41					0	3	29	32	78.05%		125	1981
2	365	Hanska	43					0	5	32	37	86.05%		120	1974
2	373	Trimont	44					0	1	12	13	29.55%		79	1987
2	386	Dundee	24		5			5		18	18	75.00%		47	1985
2	391	Storden	27					0		2	2	7.41%		52	1949
2	399	Hills	18					0			0	0.00%		81	1976
2	401	Jeffers	22					0			0	0.00%		98	1969
2	454	Kiester	25		15			15		15	15	60.00%		87	1995
2	461	Round Lake	87		26			26	5	38	43	49.43%		122	1987
2	464	Brewster	74					1		3	3	4.05%		83	1955
2	467	Lucan	25					0		21	21	84.00%		48	1984
2	475	St Clair	36					0		1	1	2.78%		67	2001
2	478	Hardwick	23	1	13			14	1	14	15	65.22%		68	2001
2	486	Delavan	0					0	0	0	0			66	1954
2	506	Ruthton	27					0		11	11	40.74%		60	1957
2	519	Clements	18					0		13	13	72.22%		36	1980
2	522	Northrop	59					0	3	29	32	54.24%		137	1993
2	534	Holland	39					0		8	8	20.51%		85	2010
2	553	Welcome	46					0	1	28	29	63.04%		101	1977
2	561	Lewisville	50		13			13		32	32	64.00%		147	1996
2	569	Easton	71					0	6	43	49	69.01%		118	1982
2	576	Avoca	37					0	6	26	32	86.49%		55	1987
2	608	Okabena	67					0	4	49	53	79.10%		116	1984
2	614	Sioux Valley	12					0		7	7	58.33%		53	1985
2	616	Good Thunder	60	1	7			8	5	28	33	55.00%		60	2020
2	617	Eagle Lake	113					0	4	65	69	61.06%		436	1995
2	632	Dovray	43					0		2	2	4.65%		70	1983
2	636	Lismore	51		1			2		34	34	66.67%		59	1981
71		2nd District Totals	3890	6	299	0	0	5	310	103	1,848	1,951	50.15%		

3RD DISTRICT

	#	Unit Name	2024 DNO	2024 Period Gain Juniors	2024 Period Gain Seniors	2024 PUFL Members	2024 Paid Online Juniors	2024 Paid Online Seniors	Period Gain Totals	Juniors To Date	Seniors To Date	To Date Totals	Percent	DNO/Date	ATH	Year
3	2	Shakopee	81					2	2		21	21	25.93%		234	1978
3	37	St Peter	90						0	1	31	32	35.56%		185	1990
3	43	Faribault	173		14					2	100	102	58.96%		349	2003
3	45	New Prague	66		4				0	1	32	33	50.00%		126	1994
3	47	Hastings	34						0	5	15	20	58.82%		155	1987
3	54	Red Wing	184					1	1		75	75	40.76%		495	1989
3	57	Chaska	193						0	3	90	93	48.19%		259	2007
3	65	Rosemount	64					7	7	2	40	42	65.63%		202	1987
3	79	Montgomery	165	2	9				0	6	80	86	52.12%		213	1991
3	84	Northfield	39					2	2	4	19	23	58.97%		152	1964
3	95	Glencoe	17						0		10	10	58.82%		123	1948
3	96	Hutchinson	203						0	7	101	108	53.20%		441	1995
3	98	St Paul Park	146						0	4	90	94	64.38%		346	1993
3	108	LeCenter	132					1	1		18	18	13.64%		243	1980
3	125	Stewart	40						0			0	0.00%		65	1995
3	141	Silver Lake	79						0		50	50	63.29%		123	2003
3	143	Brownton	30						0		14	14	46.67%		62	1954
3	144	Belle Plaine	107		2			1	1	7	62	69	64.49%		119	2007
3	149	Morristown	105						0		4	4	3.81%		107	2009
3	150	Waconia	86					4	4		38	38	44.19%		91	1999
3	184	Pine Island	129		16				0	3	51	54	41.86%		259	2003
3	189	Farmington	39						0		15	15	38.46%		136	1999
3	207	Cleveland	40						0		1	1	2.50%		68	1977
3	225	Forest Lake	214						0	1	116	117	54.67%		333	1992
3	300	Lafayette	21						0		1	1	4.76%		46	1994
3	311	Elysian	171						0	3	70	73	42.69%		180	2014
3	314	Winthrop	38						0		13	13	34.21%		122	1996
3	343	Norwood Young America	30					1	1	3	17	20	66.67%		36	1982
3	380	Kilkenny	14						0		10	10	71.43%		47	1960
3	407	Winsted	60	1	15			1	1	1	26	27	45.00%		136	2006
3	408	Green Isle	39						0		4	4	10.26%		76	1996
3	424	Inver Grove Heights	13						0		8	8	61.54%		35	2004
3	433	Gaylord	47					1	1		34	34	72.34%		76	1949
3	447	Prior Lake	11						0		6	6	54.55%		34	1999
3	463	Lester Prairie	18						0		9	9	50.00%		46	1953
3	491	Bayport	83						0		42	42	50.60%		236	1995
3	507	Mahtomedi	56						0	8	30	38	67.86%		75	2003

3	510	Nicollet	69					0	3	16	19	27.54%	98	2011	
3	518	North Mankato	95		28		1	1		35	35	36.84%	96	2006	
3	580	Chanhassen	82				1	1		51	51	62.20%	166	2003	
3	586	Lonsdale	94		3			0	2	59	61	64.89%	181	2005	
3	594	Eagan	20					0		6	6	30.00%	20	2020	
3	601	New Germany	24				1	1		17	17	70.83%	23	1953/2019	
3	620	Hugo	58		1			1	2	45	47	81.03%	112	2008	
3	643	Savage	78				1	1		20	20	25.64%	169	2007	
3	1776	Apple Valley	305				2	2	5	148	153	50.16%	435	1999	
46		3rd District Totals	3882	3	92	0	0	27	28	73	1,740	1,813	46.70%		

4TH DISTRICT

	#	Unit Name	2024 DNO	2024 Period Gain Juniors	2024 Period Gain Seniors	2024 PUFL Members	2024 Paid Online Juniors	2024 Paid Online Seniors	Period Gain Totals	Juniors To Date	Seniors To Date	To Date Totals	Percent	DNO/Date	ATH	Year
4	39	SP-North St Paul	157						0	1	84	85	54.14%		218	2004
4	168	SP-White Bear Lake	88				2		2	4	55	59	67.05%		235	1994
4	451	SP-Lester Tjernlund	9						0		1	1	11.11%		140	1994
4	474	SP-North End	29		5				5	4	15	19	65.52%		162	1991
4	542	SP-Rosetown Memorial	224						0	3	81	84	37.50%		418	1991
4	577	SP-Arcade Phalen	61		5				5	1	27	28	45.90%		178	2003
4	606	SP-Attucks Brooks	11						0		2	2	18.18%		127	1969
7		4th District Totals	579	0	10	0	0	2	12	13	265	278	48.01%			

5TH DISTRICT

	#	Unit Name	2024 DNO	2024 Period Gain Juniors	2024 Period Gain Seniors	2024 PUFL Members	2024 Paid Online Juniors	2024 Paid Online Seniors	Period Gain Totals	Juniors To Date	Seniors To Date	To Date Totals	Percent	DNO/Date	ATH	Year
5	1	Mpls-Unit #1	81				1		1		7	7	8.64%		452	1989
5	99	Mpls-Wold Chamberlain	51						0		23	23	45.10%		355	1976
5	129	Mpls-Hellenic	61						0		1	1	1.64%		139	1974
5	234	Mpls-Giantvalley	63						0		29	29	46.03%		160	2004
5	435	Mpls-Richfield	201				1		1	1	72	73	36.32%		2203	1990
5	440	Mpls-Gopher	46		14				14		17	17	36.96%		204	1990
5	511	Mpls-Aviation	19						0		4	4	21.05%		39	2005
7		5th District Totals	522	0	14	0	0	2	16	1	153	154	29.50%			

6TH DISTRICT

	#	Unit Name	2024 DNO	2024 Period Gain Juniors	2024 Period Gain Seniors	2024 PUFL Members	2024 Paid Online Juniors	2024 Paid Online Seniors	Period Gain Totals	Juniors To Date	Seniors To Date	To Date Totals	Percent	DNO/Date	ATH	Year
6	12	Long Prairie	84						0	2	39	41	48.81%		184	1970
6	14	Bemidji	64						0		31	31	48.44%		277	1973
6	23	McGregor	28		4				4		16	16	57.14%		44	2008
6	46	Little Falls	212					9	9	9	130	139	65.57%		425	1996
6	49	Pequot Lakes	127		20				20	2	71	73	57.48%		329	2001
6	67	Sauk Centre	108		1		1	35	37	4	53	57	52.78%		196	2003
6	76	St Cloud	8						0		1	1	12.50%		388	1954
6	86	Aitkin	222						0	8	126	134	60.36%		451	2011
6	101	Melrose	125					1	1	4	76	80	64.00%		152	2012
6	112	Elk River	137					7	7	2	67	69	50.36%		216	1998
6	134	Walker	198					2	2	1	92	93	46.97%		256	1972
6	137	Royalton	30		2				2		22	22	73.33%		89	2000
6	147	Big Lake	78						0	3	51	54	69.23%		138	2008
6	171	Wadena	13		2				2		2	2	15.38%		162	1948
6	193	Becker	44						0			0	0.00%		116	1992
6	202	Hackensack	185					5	5	4	132	136	73.51%		201	2007
6	211	Holdingford	66					1	1	1	47	48	72.73%		92	1997
6	212	Park Rapids	238						0	1	124	125	52.52%		508	1996
6	213	Clarissa	42						0		23	23	54.76%		130	1973
6	217	Baudette	99						0	5	62	67	67.68%		215	1985
6	221	St Stephen	42						0		34	34	80.95%		50	2004
6	254	Sauk Rapids	46		2				2		28	28	60.87%		251	1978
6	255	Brainerd	258		41				41	4	143	147	56.98%		962	1999
6	261	Kimball	143		6				6	14	92	106	74.13%		183	2007
6	271	Paynesville	98						0		59	59	60.20%		144	2006
6	284	Cass Lake	40	1	15				16	1	17	18	45.00%		313	1980
6	288	Brooten	23						0		13	13	56.52%		56	1950
6	292	Richmond	74						0		56	56	75.68%		81	2011
6	293	Browerville	21						0		13	13	61.90%		77	1971
6	298	Foley	49		16				16	1	37	38	77.55%		233	1976
6	313	Swanville	23						0		16	16	69.57%		36	1958
6	328	St Joseph	80						0		57	57	71.25%		108	1988
6	340	Hill City	30						0	1	17	18	60.00%		142	1984
6	341	Pierz	69						0	4	46	50	72.46%		159	1997
6	350	Upsala	37						0	1	19	20	54.05%		60	1950
6	354	Clear Lake	13						0		4	4	30.77%		37	1992
6	363	Akeley	10						0		6	6	60.00%		55	1978
6	366	Bertha	41						0	1	21	22	53.66%		97	1969

6	368	Backus	105		3			3		65	65	61.90%		115	2019
6	372	Blackduck	66		1			1		44	44	66.67%		126	2010
6	417	Little Sauk	75		2			2	14	46	60	80.00%		67	2009
6	428	Waite Park	250					0	1	128	129	51.60%		631	1999
6	438	Pinewood	19					0		1	1	5.26%		50	1988
6	442	Williams	22					0	1	13	14	63.64%		43	1948
6	443	Ironton	73		6			6	2	38	40	54.79%		266	1994
6	455	Cold Spring	101		1			1		71	71	70.30%		172	1975
6	456	Sebeka	69		31			31		32	32	46.38%		310	1993
6	458	Boy River	0											35	1975
6	462	Laporte	56	1	6			7	2	39	41	73.21%		35	1975
6	470	Kelliher	25					0		16	16	64.00%		109	1965
6	473	Rice	84	1	24			25	1	42	43	51.19%		112	2005
6	482	Albany	102					0	1	64	65	63.73%		195	1977
6	500	Crosslake-50 Lakes	91		6			6		48	48	52.75%		158	2003
6	557	Deerwood	50					0		20	20	40.00%		171	1991
6	560	Zimmerman	170				1	1	7	86	93	54.71%		192	2000
6	602	Hillman	83					0		44	44	53.01%		115	1983
6	612	Lake Henry	56					0		28	28	50.00%		87	2007
6	613	Pine River	60					0		34	34	56.67%		234	1994
6	621	St Augusta	58					0		24	24	41.38%		69	1978
6	627	Nisswa	160					0	2	97	99	61.88%		256	2006
6	642	Bowlus	51					0		40	40	78.43%		61	2011
61		6th District Totals	5031	3	189	0	1	61	254	104	2,863	2,967	58.97%		

7TH DISTRICT

	#	Unit Name	2024 DNO	2024 Period Gain Juniors	2024 Period Gain Seniors	2024 PUFL Members	2024 Paid Online Juniors	2024 Paid Online Seniors	Period Gain Totals	Juniors To Date	Seniors To Date	To Date Totals	Percent	DNO/Date	ATH	Year
7	29	Morris	134		3				3	1	75	76	56.72%		271	1979
7	58	Browns Valley	86						0	3	32	35	40.70%		137	1955
7	59	Montevideo	135						0		60	60	44.44%		259	1997
7	69	Granite Falls	46						0		31	31	67.39%		156	1976
7	80	Wheaton	85	3	12				15	3	51	54	63.53%		138	1978
7	104	Litchfield	75		28				28	1	51	52	69.33%		248	1983
7	113	Marshall	94						0		22	22	23.40%		328	1948
7	126	Cosmos	53						0	1	33	34	64.15%		93	1999
7	135	Hector	42						0		21	21	50.00%		84	1974
7	156	Marietta	153				4	74	78	4	86	90	58.82%		157	2020
7	158	Madison	107						0		39	39	36.45%		337	1980
7	167	Willmar	208		26			1	27	6	116	122	58.65%		579	1970
7	169	Clarkfield	34						0		2	2	5.88%		109	1960
7	173	Tracy	41						0		30	30	73.17%		198	2007
7	175	Villard	25		14				14		16	16	64.00%		50	1947
7	186	Olivia	30						0		18	18	60.00%		146	1988
7	188	Evansville	19		3				3		15	15	78.95%		31	1950
7	199	Minneota	33		1				1	1	16	17	51.52%		103	1951
7	204	Echo	38						0	2	21	23	60.53%		78	1981
7	205	Fairfax	38		20				20		20	20	52.63%		128	1954
7	223	Kerkhoven	30						0		19	19	63.33%		81	1996
7	229	Sacred Heart	13						0		4	4	30.77%		47	1956
7	237	Balaton	18						0		2	2	11.11%		83	1977
7	252	Maynard	32						0			0	0.00%		65	1962
7	253	Lowry	55						0	3	35	38	69.09%		77	2001
7	258	Clinton	44						0	3	24	27	61.36%		71	1963
7	268	Kensington	27		15				15		15	15	55.56%		58	2006
7	273	Garvin	25						0		11	11	44.00%		53	1992
7	278	Brandon	28						0	2	24	26	92.86%		57	1988
7	297	Graceville	60						0	1	32	33	55.00%		62	1966
7	302	Beardsley	32						0		15	15	46.88%		142	1982
7	321	Elbow Lake	39						0		2	2	5.13%		109	1993
7	351	Barrett	39						0		16	16	41.03%		95	2005
7	357	Ashby	93					24	24		62	62	66.67%		148	1987
7	359	Milan	29						0		10	10	34.48%		93	1975
7	375	Atwater	35						0	1	13	14	40.00%		93	1997
7	378	Herman	39		22				22		23	23	58.97%		77	1992
7	381	Eden Valley	115					1	1	4	63	67	58.26%		188	1960

7	393	Hoffman	16						0		1	1	6.25%		52	1996
7	420	Raymond	35						0		4	4	11.43%		73	1989
7	426	Wendell	21						0		16	16	76.19%		50	1996
7	430	Bird Island	96	8	20				28	15	56	71	73.96%		137	2012
7	441	Bellingham	81						0	1	35	36	44.44%		136	1951
7	457	Porter	20						0		1	1	5.00%		59	1965
7	483	Kingston	34						0			0	0.00%		48	1951
7	485	Clara City	35	2	21				23	2	21	23	65.71%		134	1929
7	524	St Leo	17		2				2		10	10	58.82%		35	1958
7	527	Millerville	36		2				2		29	29	80.56%		53	1996
7	537	New London	161						4	10	85	95	59.01%		205	1948
7	545	Spicer	95	7	42				49	7	47	54	56.84%		128	1981
7	556	Wood Lake	23		3				3		12	12	52.17%		85	1964
7	629	Chokio	28						0		21	21	75.00%		92	1993
7	638	Westport	28						0	6	12	18	64.29%		31	1966
53		7th District Totals	2955	20	234	0	4	104	362	77	1,475	1,552	52.52%			

8TH DISTRICT

	#	Unit Name	2024 DNO	2024 Period Gain Juniors	2024 Period Gain Seniors	2024 PUFL Members	2024 Paid Online Juniors	2024 Paid Online Seniors	Period Gain Totals	Juniors To Date	Seniors To Date	To Date Totals	Percent	DNO/Date	ATH	Year
8	60	Grand Rapids	104						0	1	64	65	62.50%		223	2003
8	71	Du-West Duluth	295		8			1	9	1	213	214	72.54%		663	1996
8	109	Two Harbors	115					3	3	12	58	70	60.87%		293	1962
8	122	Deer River	37					1	1		16	16	43.24%		89	1984
8	182	Effie	31						0		16	16	51.61%		37	2009
8	222	Hibbing	44						0		5	5	11.36%		250	1959
8	241	Aurora	99						0		42	42	42.42%		270	1983
8	248	Ely	88					1	1		24	24	27.27%		254	1981
8	262	Cloquet	74		5				5	1	42	43	58.11%		258	1977
8	307	Nashwauk	68						0	1	17	18	26.47%		146	1982
8	379	Moose Lake	34						0	1	25	26	76.47%		79	1950
8	413	Grand Marais	54					1	1	2	22	24	44.44%		124	1993
8	415	Barnum	15		12				12		13	13	86.67%		62	1926
8	432	Warba	29		14				14	1	21	22	75.86%		59	2003
8	452	Keewatin	24						0		2	2	8.33%		80	1964
8	494	Big Falls	14						0		10	10	71.43%		50	1946
8	499	Northome	27		2			1	3	1	22	23	85.19%		65	1977
8	562	Brookston	14						0			0	0.00%		38	1976
8	575	Goodland	19						0	0	15	15	78.95%		42	1961
19		8th District Totals	1185	0	41	0	0	8	49	21	627	648	54.68%			

9TH DISTRICT

	#	Unit Name	2024 DNO	2024 Period Gain Juniors	2024 Period Gain Seniors	2024 PUFL Members	2024 Paid Online Juniors	2024 Paid Online Seniors	Period Gain Totals	Juniors To Date	Seniors To Date	To Date Totals	Percent	DNO/Date	ATH	Year
9	15	Detroit Lakes	159						0	6	80	86	54.09%		304	2005
9	16	Bagley	198						0	7	132	139	70.20%		278	1983
9	17	Pelican Rapids	32						0			0	0.00%		93	1993
9	20	Crookston	121						0	9	63	72	59.50%		261	1957
9	21	Moorhead	211					1	1	7	135	142	67.30%		473	1950
9	22	Red Lake Falls	167						0	12	72	84	50.30%		300	2006
9	24	Roseau	107						0	4	56	60	56.07%		166	1964
9	25	Warroad	43						0		5	5	11.63%		97	1974
9	27	Warren	175						0	16	111	127	72.57%		308	1985
9	30	Fergus Falls	39						0		16	16	41.03%		277	1946
9	31	Mahnomen	34						0			0	0.00%		175	1981
9	35	Alvarado	58						0		2	2	3.45%		90	2006
9	88	Greenbush	43		6				6		24	24	55.81%		73	2011
9	114	Fosston	20		11				11		11	11	55.00%		181	1983
9	117	Thief River Falls	231						0	1	142	143	61.90%		756	1976
9	148	Dent	48						0	1	27	28	58.33%		62	1963
9	153	Barnesville	128		23			1	24		63	63	49.22%		331	2003
9	157	East Grand Forks	361						0	5	182	187	51.80%		831	2010
9	159	Oklee	22						0			0	0.00%		53	1949
9	162	Grygla	22						0		9	9	40.91%		29	2002
9	181	Lake Park	20						0			0	0.00%		84	1954
9	214	Lancaster	78					2	2	3	19	22	28.21%		116	1996
9	238	Fertile	42		17				17		21	21	50.00%		115	2005
9	242	Fisher	59						0		39	39	66.10%		71	1956
9	256	Clearbrook	56						0	3	35	38	67.86%		141	1992
9	283	Deer Creek	19						0		9	9	47.37%		33	1996
9	304	Gonvick	54		11				11		33	33	61.11%		99	1999
9	331	Oslo	35		1				1	1	24	25	71.43%		101	1950
9	353	Argyle	112						0	28	70	98	87.50%		165	1988
9	371	Roosevelt	32						0	1	30	31	96.88%		61	2017
9	376	Rothsay	21					1	1		7	7	33.33%		77	1954
9	382	Hawley	34						0		23	23	67.65%		73	1948
9	390	Stephen	33						0		1	1	3.03%		106	1974
9	402	Halstad	11						0		5	5	45.45%		64	1972
9	427	Newfolden	37						0		2	2	5.41%		46	1978
9	431	Twin Valley	29						0		1	1	3.45%		105	1948
9	434	Hendrum	16						0		9	9	56.25%		43	1986
9	436	Waubun	38						0		23	23	60.53%		57	2012

9	444	Middle River	150					0		3	3	2.00%		149	2019
9	445	Karlstad	85					0	6	36	42	49.41%		93	2017
9	466	Strandquist	15					0			0	0.00%		38	1954
9	489	Underwood	40					0		2	2	5.00%		125	1978
9	505	Gary	34					0		27	27	79.41%		96	1982
9	539	Euclid	24					0		2	2	8.33%		50	1985
9	603	Gully	22					0		0	0	0.00%		37	1951
9	623	Plummer	33		20			20		25	25	75.76%		117	1991
46		9th District Totals	3348	0	89	0	0	5	94	110	1,576	1,686	50.36%		

10TH DISTRICT

	#	Unit Name	2024 DNO	2024 Period Gain Juniors	2024 Period Gain Seniors	2024 PUFL Members	2024 Paid Online Juniors	2024 Paid Online Seniors	Period Gain Totals	Juniors To Date	Seniors To Date	To Date Totals	Percent	DNO/Date	ATH	Year
10	51	Pine City	111	1	5				6	1	64	65	58.56%		247	1999
10	83	Lindstrom	14						0			0	0.00%		87	1956
10	85	North Branch	148						0		15	15	10.14%		212	2003
10	93	Rush City	16		11				11		11	11	68.75%		66	1953
10	102	Anoka	196						0	6	109	115	58.67%		376	2010
10	118	Wayzata	235				4	42	46	14	96	110	46.81%		259	2005
10	131	Maple Lake	93						0		1	1	1.08%		115	2006
10	139	Harris	28						0	5	15	20	71.43%		52	2010
10	145	Howard Lake	54		16			1	17		22	22	40.74%		81	2007
10	151	Sandstone	23						0		1	1	4.35%		66	1947
10	163	Willow River	23		2				2		18	18	78.26%		48	1935
10	172	Osseo	248					5	5	4	161	165	66.53%		371	1993
10	178	Milaca	109		39				39		54	54	49.54%		240	2010
10	201	Mora	68		12				12	3	49	52	76.47%		337	1990
10	209	Cokato	64						0	3	36	39	60.94%		146	1947
10	216	Princeton	148						0		50	50	33.78%		392	1989
10	259	Excelsior	106						0	5	46	51	48.11%		163	1988
10	260	Monticello	196		8			1	9	10	124	134	68.37%		348	1995
10	270	Buffalo	98	4	7				11	4	42	46	46.94%		304	2002
10	282	St Louis Park	67						0		43	43	64.18%		228	1989
10	290	Cambridge	92						0	2	25	27	29.35%		348	1993
10	303	Fridley	187					9	9	2	95	97	51.87%		277	2007
10	305	Waverly	52						0		37	37	71.15%		70	1949
10	312	Stacy	9		2			1	3		4	4	44.44%		42	1975
10	320	Hopkins	160						0	8	71	79	49.38%		269	1987
10	323	Clearwater	61						0		3	3	4.92%		154	1996
10	334	Coon Rapids	145					4	4	4	72	76	52.41%		545	1993
10	347	Beroun	20						0		15	15	75.00%		57	1984
10	377	Delano	131						0	1	58	59	45.04%		252	2006
10	395	Onamia	66						0	1	39	40	60.61%		110	1946
10	398	Mound	119		2			1	3	3	60	63	52.94%		225	1980
10	513	New Brighton	22						0			0	0.00%		248	1991
10	514	Maple Plain	58						0	2	22	24	41.38%		104	1993
10	523	Golden Valley	78						0		18	18	23.08%		275	1996
10	550	Bloomington	119		14			1	15		62	62	52.10%		841	1991
10	563	Bruno	26						0		7	7	26.92%		21	2019
10	566	Lino Lakes	104					2	2	1	52	53	50.96%		278	1994
10	567	St Michael	111					1	1	4	64	68	61.26%		143	1996

10	600	Champlin	51					0	2	19	21	41.18%		396	1998
10	622	St Francis	28					0		2	2	7.14%		91	2001
10	630	Brooklyn Center	83					0	1	33	34	40.96%		150	2016
10	640	Ogilvie	45					0	5	27	32	71.11%		80	2002
42		10th District Totals	3812	5	118	0	4	68	195	91	1,742	1,833	48.08%		

1	1982	At Large	404		8			1	9	6	202	208	51.49%		
400			29,370	43	1,238	0	12	349	1,548	674	14,199	14,873	50.64%		