

AMERICAN LEGION AUXILIARY

Bulletin #6 as of 10/1/2024

2025 Membership

Member-opoly

"Finding Members in Everyday Places"

Your Leader is Rich Aunty Pennybags, Hope Wilson

DISTRICT	# of Units	Goal	Period Gain	Membership To Date	Percent of Goal	Membership Last Year 10/3/23	Difference from Last Year
One	47	3,341	77	610	18.26%	668	-58
Two	70	3,456	161	683	19.76%	750	-67
Three	46	3,476	201	674	19.39%	584	90
Four	7	514	14	79	15.37%	99	-20
Five	7	463	19	62	13.39%	47	15
Six	60	4,469	216	959	21.46%	929	30
Seven	52	2,579	57	311	12.06%	409	-98
Eight	19	1,076	47	171	15.89%	176	-5
Nine	45	2,944	36	419	14.23%	473	-54
Ten	41	3,391	150	714	21.06%	553	161
1982 & 0476	2	336	31	112	33.33%	67	45
Department Total	396	26,045	1,009	4,794	18.41%	4,755	39
Group 1 (Even) Linda Kelly	197	12,906	588	2,606	20.19%	2,507	99
Group 2 (Odd) Robin Dorf	197	12,803	390	2,076	16.21%	2,181	-105

RANKINGS

1st

21.46%

District 6

2nd

21.06%

District 10

3rd

19.76%

District 2

4th

19.39%

District 3

5th

18.26%

District 1

6th

15.89%

District 8

7th

15.37%

District 4

8th

14.23%

District 9

9th

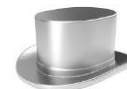
13.39%

District 5

10th

12.06%

District 7



2024-2025 Membership Bulletin

Dist	Unit	Unit Location	2025 DNO	Goal Dates Set By National				Junior	Senior	Total	Percent to Date	100%+ Date
				85% by 3/15/25	95% by 5/23/25	100% by 7/4/25	102% by 7/26/25					
00	0476	Lawrence Lk Twshp	41	35	39	41	42	2	26	28	68.29%	
00	1982	St Paul	295	251	280	295	301	2	82	84	28.47%	
00 Total			336					4	108	112	33.33%	
01	0009	Winona	114	97	108	114	116	0	10	10	8.77%	
01	0040	Lanesboro	101	86	96	101	103	0	2	2	1.98%	
01	0050	Wabasha	111	94	105	111	113	1	28	29	26.13%	
01	0052	Blooming Prairie	89	76	85	89	91	0	12	12	13.48%	
01	0056	Albert Lea	205	174	195	205	209	0	32	32	15.61%	
01	0068	Spring Valley	48	41	46	48	49	0	3	3	6.25%	
01	0075	New Richland	32	27	30	32	33	0	2	2	6.25%	
01	0077	Owatonna	98	83	93	98	100	0	14	14	14.29%	
01	0081	Harmony	44	37	42	44	45	0	1	1	2.27%	
01	0090	Lewiston	29	25	28	29	30	0	1	1	3.45%	
01	0091	Austin	88	75	84	88	90	0	1	1	1.14%	
01	0092	Rochester	115	98	109	115	117	1	35	36	31.30%	
01	0094	Rushford	50	43	48	50	51	1	24	25	50.00%	
01	0105	Lyle	45	38	43	45	46	0	0	0	0.00%	
01	0110	Lake City	37	31	35	37	38	0	1	1	2.70%	
01	0119	Byron	14	12	13	14	14	0	9	9	64.29%	
01	0140	Grand Meadow	63	54	60	63	64	3	25	28	44.44%	
01	0146	Adams	120	102	114	120	122	5	32	37	30.83%	
01	0161	Le Roy	42	36	40	42	43	0	0	0	0.00%	
01	0164	Stewartville	164	139	156	164	167	0	57	57	34.76%	
01	0179	Plainview	113	96	107	113	115	0	5	5	4.42%	
01	0190	Saint Charles	6	5	6	6	6	0	4	4	66.67%	
01	0191	Caledonia	64	54	61	64	65	0	37	37	57.81%	
01	0197	Chatfield	18	9/17/24	17	18	18	0	16	16	88.89%	
01	0228	Waseca	229	195	218	229	234	2	39	41	17.90%	
01	0249	Spring Grove	73	62	69	73	74	0	3	3	4.11%	
01	0264	Glenville	86	73	82	86	88	1	14	15	17.44%	
01	0295	West Concord	26	22	25	26	27	0	1	1	3.85%	
01	0299	Mabel	106	90	101	106	108	3	29	32	30.19%	
01	0330	Hayfield	175	149	166	175	179	0	6	6	3.43%	
01	0333	Kasson	125	106	119	125	128	0	12	12	9.60%	
01	0369	Wykoff	18	15	17	18	18	0	1	1	5.56%	
01	0384	Dodge Center	56	48	53	56	57	0	2	2	3.57%	
01	0404	Alden	36	31	34	36	37	0	0	0	0.00%	
01	0422	Claremont	20	17	19	20	20	0	2	2	10.00%	
01	0423	Houston	109	93	104	109	111	0	2	2	1.83%	
01	0498	Hokah	18	15	17	18	18	0	3	3	16.67%	
01	0526	Peterson	44	37	42	44	45	1	18	19	43.18%	
01	0544	Ostrander	9	8	9	9	9	0	0	0	0.00%	
01	0551	Eyota	88	75	84	88	90	1	16	17	19.32%	
01	0552	Freeborn	55	9/17/24	9/17/24	55	56	9	44	53	96.36%	
01	0573	Elgin	8	7	8	8	8	0	1	1	12.50%	
01	0579	Millville	39	33	37	39	40	0	3	3	7.69%	
01	0587	Waldorf	15	13	14	15	15	0	0	0	0.00%	
01	0588	Mazeppa	34	29	32	34	35	0	3	3	8.82%	
01	0595	La Crescent	148	126	141	148	151	0	20	20	13.51%	
01	0637	Whalan	14	9/24/24	13	14	14	0	12	12	85.71%	

Dist	Unit	Unit Location	2025 DNO	Goal Dates Set By National				Junior	Senior	Total	Percent to Date	100%+ Date
				85% by 3/15/25	95% by 5/23/25	100% by 7/4/25	102% by 7/26/25					
01 Total			3341					28	582	610	18.26%	
02	0004	Lakefield	46	39	44	46	47	0	4	4	8.70%	
02	0006	Pipestone	49	42	47	49	50	0	28	28	57.14%	
02	0007	Sleepy Eye	27	23	26	27	28	0	5	5	18.52%	
02	0010	Lake Benton	40	34	38	40	41	0	0	0	0.00%	
02	0011	Mankato	55	47	52	55	56	3	16	19	34.55%	
02	0019	Madelia	64	54	61	64	65	0	25	25	39.06%	
02	0032	Adrian	32	27	30	32	33	0	0	0	0.00%	
02	0033	Saint James	52	44	49	52	53	0	3	3	5.77%	
02	0036	Fairmont	114	97	108	114	116	0	10	10	8.77%	
02	0038	Redwood Falls	54	46	51	54	55	0	1	1	1.85%	
02	0041	Lamberton	96	82	91	96	98	1	22	23	23.96%	
02	0042	Edgerton	31	26	29	31	32	0	7	7	22.58%	
02	0064	Slayton	43	37	41	43	44	0	0	0	0.00%	
02	0082	Winnebago	22	19	21	22	22	0	9	9	40.91%	
02	0089	Blue Earth	88	75	84	88	90	0	4	4	4.55%	
02	0115	Truman	8	7	8	8	8	0	3	3	37.50%	
02	0123	Luverne	29	25	28	29	30	0	6	6	20.69%	
02	0130	Jackson	125	106	119	125	128	0	4	4	3.20%	
02	0132	New Ulm	147	125	140	147	150	0	5	5	3.40%	
02	0133	Jasper	24	20	23	24	24	0	0	0	0.00%	
02	0165	Bricelyn	30	26	29	30	31	3	8	11	36.67%	
02	0195	Hendricks	29	25	28	29	30	0	0	0	0.00%	
02	0196	Ellsworth	18	15	17	18	18	0	0	0	0.00%	
02	0206	Windom	46	39	44	46	47	0	9	9	19.57%	
02	0210	Wells	151	128	143	151	154	0	20	20	13.25%	
02	0224	Heron Lake	36	31	34	36	37	0	0	0	0.00%	
02	0244	Comfrey	32	10/1/24	30	32	33	1	29	30	93.75%	
02	0257	Springfield	130	111	124	130	133	0	3	3	2.31%	
02	0263	Wabasso	90	77	86	90	92	0	6	6	6.67%	
02	0267	Walnut Grove	80	68	76	80	82	0	5	5	6.25%	
02	0269	Madison Lake	26	22	25	26	27	0	0	0	0.00%	
02	0274	Milroy	26	22	25	26	27	0	0	0	0.00%	
02	0276	Amboy	29	25	28	29	30	3	20	23	79.31%	
02	0285	Lake Wilson	100	85	95	100	102	0	0	0	0.00%	
02	0286	Sanborn	40	34	38	40	41	3	17	20	50.00%	
02	0287	Minnesota Lake	71	60	67	71	72	5	38	43	60.56%	
02	0294	Lake Crystal	142	121	135	142	145	7	79	86	60.56%	
02	0306	Vesta	12	10	11	12	12	0	0	0	0.00%	
02	0309	Belview	36	31	34	36	37	0	13	13	36.11%	
02	0318	Fulda	32	27	30	32	33	0	17	17	53.13%	
02	0322	Currie	55	47	52	55	56	0	2	2	3.64%	
02	0329	Cambria	12	10	11	12	12	0	0	0	0.00%	
02	0338	Chandler	24	20	23	24	24	0	20	20	83.33%	
02	0356	Sherburn	39	33	37	39	40	3	31	34	87.18%	
02	0365	Hanska	40	34	38	40	41	3	14	17	42.50%	
02	0373	Trimont	32	27	30	32	33	0	13	13	40.63%	
02	0386	Dundee	21	18	20	21	21	0	0	0	0.00%	
02	0391	Storden	29	25	28	29	30	0	1	1	3.45%	
02	0399	Hills	12	10	11	12	12	0	0	0	0.00%	
02	0401	Jeffers	18	15	17	18	18	0	0	0	0.00%	
02	0454	Kiester	21	18	20	21	21	0	0	0	0.00%	

Dist	Unit	Unit Location	2025 DNO	Goal Dates Set By National				Junior	Senior	Total	Percent to Date	100%+ Date
				85% by 3/15/25	95% by 5/23/25	100% by 7/4/25	102% by 7/26/25					
02	0461	Round Lake	73	62	69	73	74	3	7	10	13.70%	
02	0464	Brewster	61	52	58	61	62	0	2	2	3.28%	
02	0467	Lucan	23	20	22	23	23	0	0	0	0.00%	
02	0475	Saint Clair	34	29	32	34	35	0	0	0	0.00%	
02	0478	Hardwick	19	16	18	19	19	0	0	0	0.00%	
02	0506	Ruthton	21	18	20	21	21	0	0	0	0.00%	
02	0519	Clements	15	13	14	15	15	0	1	1	6.67%	
02	0522	Northrop	52	44	49	52	53	3	14	17	32.69%	
02	0534	Holland	36	31	34	36	37	0	8	8	22.22%	
02	0553	Welcome	43	37	41	43	44	1	24	25	58.14%	
02	0561	Lewisville	46	39	44	46	47	0	3	3	6.52%	
02	0569	Easton	68	58	65	68	69	4	24	28	41.18%	
02	0576	Avoca	38	32	36	38	39	7	25	32	84.21%	
02	0608	Okabena	63	54	60	63	64	1	20	21	33.33%	
02	0614	Sioux Valley	8	7	8	8	8	0	0	0	0.00%	
02	0616	Good Thunder	61	52	58	61	62	0	0	0	0.00%	
02	0617	Eagle Lake	123	105	117	123	125	0	4	4	3.25%	
02	0632	Dovray	19	16	18	19	19	0	2	2	10.53%	
02	0636	Lismore	48	41	46	48	49	0	1	1	2.08%	
02 Total			3456					51	632	683	19.76%	
03	0002	Shakopee	78	66	74	78	80	0	18	18	23.08%	
03	0037	Saint Peter	76	65	72	76	78	0	4	4	5.26%	
03	0043	Faribault	171	145	162	171	174	0	23	23	13.45%	
03	0045	New Prague	68	58	65	68	69	0	9	9	13.24%	
03	0047	Hastings	29	25	28	29	30	0	1	1	3.45%	
03	0054	Red Wing	172	146	163	172	175	0	12	12	6.98%	
03	0057	Chaska	158	134	150	158	161	1	29	30	18.99%	
03	0065	Rosemount	57	48	54	57	58	1	19	20	35.09%	
03	0079	Montgomery	142	121	135	142	145	3	24	27	19.01%	
03	0084	Northfield	36	31	34	36	37	0	0	0	0.00%	
03	0095	Glencoe	16	14	15	16	16	0	0	0	0.00%	
03	0096	Hutchinson	174	148	165	174	177	5	48	53	30.46%	
03	0098	St Paul Park	127	108	121	127	130	3	54	57	44.88%	
03	0108	Le Center	112	95	106	112	114	0	13	13	11.61%	
03	0125	Stewart	38	32	36	38	39	0	0	0	0.00%	
03	0141	Silver Lake	65	55	62	65	66	0	33	33	50.77%	
03	0143	Brownton	19	16	18	19	19	0	14	14	73.68%	
03	0144	Belle Plaine	105	89	100	105	107	3	31	34	32.38%	
03	0149	Morristown	89	76	85	89	91	0	4	4	4.49%	
03	0150	Waconia	80	68	76	80	82	0	33	33	41.25%	
03	0184	Pine Island	89	76	85	89	91	1	5	6	6.74%	
03	0189	Farmington	31	26	29	31	32	0	1	1	3.23%	
03	0207	Cleveland	41	35	39	41	42	0	1	1	2.44%	
03	0225	Forest Lake	202	172	192	202	206	0	75	75	37.13%	
03	0300	Lafayette	21	18	20	21	21	0	0	0	0.00%	
03	0311	Elysian	180	153	171	180	184	0	10	10	5.56%	
03	0314	Winthrop	25	21	24	25	26	0	0	0	0.00%	
03	0343	Norwood	24	20	23	24	24	0	10	10	41.67%	
03	0380	Kilkenny	14	12	13	14	14	0	0	0	0.00%	
03	0407	Winsted	46	39	44	46	47	0	1	1	2.17%	
03	0408	Green Isle	35	30	33	35	36	0	3	3	8.57%	
03	0424	Inver Grove Heights	10	9	10	10	10	0	0	0	0.00%	

Dist	Unit	Unit Location	2025 DNO	Goal Dates Set By National				Junior	Senior	Total	Percent to Date	100%+ Date
				85% by 3/15/25	95% by 5/23/25	100% by 7/4/25	102% by 7/26/25					
03	0433	Gaylord	55	47	52	55	56	0	18	18	32.73%	
03	0447	Prior Lake	10	9	10	10	10	0	3	3	30.00%	
03	0463	Lester Prairie	15	13	14	15	15	0	0	0	0.00%	
03	0491	Bayport	89	76	85	89	91	0	1	1	1.12%	
03	0507	Willernie	51	43	48	51	52	6	19	25	49.02%	
03	0510	Nicollet	60	51	57	60	61	0	23	23	38.33%	
03	0518	North Mankato	84	71	80	84	86	0	3	3	3.57%	
03	0580	Chanhassen	77	65	73	77	79	0	30	30	38.96%	
03	0586	Lonsdale	79	67	75	79	81	0	8	8	10.13%	
03	0594	Eagan	13	11	12	13	13	0	2	2	15.38%	
03	0601	New Germany	21	18	20	21	21	0	3	3	14.29%	
03	0620	Hugo	71	60	67	71	72	0	5	5	7.04%	
03	0643	Savage	56	48	53	56	57	0	10	10	17.86%	
03	1776	Apple Valley	265	225	252	265	270	2	49	51	19.25%	
03 Total			3476					25	649	674	19.39%	
04	0039	North St Paul	165	140	157	165	168	1	18	19	11.52%	
04	0168	White Bear Lake	97	82	92	97	99	4	28	32	32.99%	
04	0451	Saint Paul	1	1	1	1	1	0	2	2	200.00%	8/1/24
04	0474	Saint Paul	25	21	24	25	26	0	0	0	0.00%	
04	0542	Saint Paul	173	147	164	173	176	3	21	24	13.87%	
04	0577	Saint Paul	48	41	46	48	49	0	1	1	2.08%	
04	0606	Saint Paul	5	4	5	5	5	0	1	1	20.00%	
04 Total			514					8	71	79	15.37%	
05	0001	Minneapolis	65	55	62	65	66	5	14	19	29.23%	
05	0099	Minneapolis	44	37	42	44	45	0	10	10	22.73%	
05	0129	Minneapolis	69	59	66	69	70	0	0	0	0.00%	
05	0234	Minneapolis	54	46	51	54	55	0	7	7	12.96%	
05	0435	Richfield	181	154	172	181	185	0	21	21	11.60%	
05	0440	Minneapolis	32	27	30	32	33	0	2	2	6.25%	
05	0511	Minneapolis	18	15	17	18	18	0	3	3	16.67%	
05 Total			463					5	57	62	13.39%	
06	0012	Long Prairie	64	54	61	64	65	1	5	6	9.38%	
06	0014	Bemidji	49	42	47	49	50	0	4	4	8.16%	
06	0023	McGregor	29	25	28	29	30	0	7	7	24.14%	
06	0046	Little Falls	200	170	190	200	204	1	30	31	15.50%	
06	0049	Pequot Lakes	117	99	111	117	119	0	33	33	28.21%	
06	0067	Sauk Centre	102	87	97	102	104	2	20	22	21.57%	
06	0076	Saint Cloud	1	1	1	1	1	0	0	0	0.00%	
06	0086	Aitkin	212	180	201	212	216	0	12	12	5.66%	
06	0101	Melrose	124	105	118	124	126	1	27	28	22.58%	
06	0112	Elk River	126	107	120	126	129	3	34	37	29.37%	
06	0134	Walker	174	148	165	174	177	2	24	26	14.94%	
06	0137	Royalton	28	24	27	28	29	0	9	9	32.14%	
06	0147	Big Lake	56	48	53	56	57	0	30	30	53.57%	
06	0171	Wadena	2	2	2	2	2	0	0	0	0.00%	
06	0193	Becker	41	35	39	41	42	0	1	1	2.44%	
06	0202	Hackensack	188	160	179	188	192	3	98	101	53.72%	
06	0211	Holdingsford	58	49	55	58	59	0	2	2	3.45%	
06	0212	Park Rapids	171	145	162	171	174	0	54	54	31.58%	
06	0213	Clarissa	43	37	41	43	44	0	2	2	4.65%	
06	0217	Baudette	83	71	79	83	85	0	31	31	37.35%	
06	0221	Saint Joseph	39	33	37	39	40	0	1	1	2.56%	

Dist	Unit	Unit Location	2025 DNO	Goal Dates Set By National				Junior	Senior	Total	Percent to Date	100%+ Date
				85% by 3/15/25	95% by 5/23/25	100% by 7/4/25	102% by 7/26/25					
06	0254	Sauk Rapids	36	31	34	36	37	0	2	2	5.56%	
06	0255	Brainerd	234	199	222	234	239	0	29	29	12.39%	
06	0261	Kimball	143	122	136	143	146	11	37	48	33.57%	
06	0271	Paynesville	84	71	80	84	86	0	14	14	16.67%	
06	0284	Cass Lake	40	34	38	40	41	0	1	1	2.50%	
06	0288	Brooten	20	17	19	20	20	0	1	1	5.00%	
06	0292	Richmond	73	62	69	73	74	0	7	7	9.59%	
06	0293	Browerville	17	14	16	17	17	0	1	1	5.88%	
06	0298	Foley	47	40	45	47	48	0	3	3	6.38%	
06	0313	Swanville	17	14	16	17	17	0	1	1	5.88%	
06	0328	Saint Joseph	77	65	73	77	79	0	20	20	25.97%	
06	0340	Hill City	30	26	29	30	31	0	0	0	0.00%	
06	0341	Pierz	55	47	52	55	56	4	37	41	74.55%	
06	0350	Upsala	30	26	29	30	31	0	2	2	6.67%	
06	0354	Clear Lake	10	9	10	10	10	0	0	0	0.00%	
06	0363	Akeley	7	9/17/24	7	7	7	0	6	6	85.71%	
06	0366	Bertha	35	30	33	35	36	1	6	7	20.00%	
06	0368	Backus	93	79	88	93	95	1	47	48	51.61%	
06	0372	Blackduck	50	43	48	50	51	1	6	7	14.00%	
06	0417	Little Sauk	78	66	74	78	80	14	24	38	48.72%	
06	0428	Waite Park	174	148	165	174	177	0	37	37	21.26%	
06	0438	Pinewood	15	13	14	15	15	0	5	5	33.33%	
06	0442	Williams	20	17	19	20	20	1	10	11	55.00%	
06	0443	Ironton	51	43	48	51	52	0	1	1	1.96%	
06	0455	Cold Spring	101	86	96	101	103	0	20	20	19.80%	
06	0456	Sebeka	46	39	44	46	47	0	2	2	4.35%	
06	0462	Laporte	55	47	52	55	56	0	14	14	25.45%	
06	0470	Kelliher	23	20	22	23	23	0	0	0	0.00%	
06	0473	Rice	78	66	74	78	80	0	3	3	3.85%	
06	0482	Albany	95	81	90	95	97	0	6	6	6.32%	
06	0500	Crosslake	87	74	83	87	89	0	20	20	22.99%	
06	0557	Deerwood	42	36	40	42	43	0	4	4	9.52%	
06	0560	Zimmerman	176	150	167	176	180	4	21	25	14.20%	
06	0602	Hillman	75	64	71	75	77	0	13	13	17.33%	
06	0612	Lake Henry	47	40	45	47	48	1	11	12	25.53%	
06	0613	Pine River	59	50	56	59	60	0	6	6	10.17%	
06	0621	St Augusta	60	51	57	60	61	0	1	1	1.67%	
06	0627	Nisswa	136	116	129	136	139	2	43	45	33.09%	
06	0642	Bowlus	46	39	44	46	47	0	21	21	45.65%	
06 Total			4469					53	906	959	21.46%	
07	0029	Morris	112	95	106	112	114	0	30	30	26.79%	
07	0058	Browns Valley	72	61	68	72	73	2	11	13	18.06%	
07	0059	Montevideo	105	89	100	105	107	0	5	5	4.76%	
07	0069	Granite Falls	48	41	46	48	49	0	4	4	8.33%	
07	0080	Wheaton	66	56	63	66	67	0	4	4	6.06%	
07	0104	Litchfield	69	59	66	69	70	0	20	20	28.99%	
07	0113	Marshall	65	55	62	65	66	0	15	15	23.08%	
07	0126	Cosmos	47	40	45	47	48	3	27	30	63.83%	
07	0135	Hector	41	35	39	41	42	0	6	6	14.63%	
07	0156	Marietta	129	110	123	129	132	0	16	16	12.40%	
07	0158	Madison	83	71	79	83	85	0	4	4	4.82%	
07	0167	Willmar	207	176	197	207	211	0	15	15	7.25%	

Dist	Unit	Unit Location	2025 DNO	Goal Dates Set By National				Junior	Senior	Total	Percent to Date	100%+ Date
				85% by 3/15/25	95% by 5/23/25	100% by 7/4/25	102% by 7/26/25					
07	0169	Clarkfield	31	26	29	31	32	0	1	1	3.23%	
07	0173	Tracy	36	31	34	36	37	0	8	8	22.22%	
07	0175	Villard	18	15	17	18	18	0	2	2	11.11%	
07	0186	Olivia	28	24	27	28	29	0	0	0	0.00%	
07	0188	Evansville	17	14	16	17	17	0	0	0	0.00%	
07	0199	Minneota	26	22	25	26	27	0	6	6	23.08%	
07	0204	Echo	36	31	34	36	37	0	0	0	0.00%	
07	0205	Fairfax	28	24	27	28	29	0	0	0	0.00%	
07	0223	Kerkhoven	27	23	26	27	28	0	0	0	0.00%	
07	0229	Sacred Heart	17	14	16	17	17	2	4	6	35.29%	
07	0237	Balaton	13	11	12	13	13	0	1	1	7.69%	
07	0252	Maynard	28	24	27	28	29	0	0	0	0.00%	
07	0253	Lowry	57	48	54	57	58	0	2	2	3.51%	
07	0258	Clinton	39	33	37	39	40	1	3	4	10.26%	
07	0268	Kensington	25	21	24	25	26	0	0	0	0.00%	
07	0273	Garvin	18	15	17	18	18	0	0	0	0.00%	
07	0278	Brandon	32	27	30	32	33	3	18	21	65.63%	
07	0297	Graceville	60	51	57	60	61	0	3	3	5.00%	
07	0302	Beardsley	31	26	29	31	32	0	2	2	6.45%	
07	0321	Elbow Lake	8	7	8	8	8	0	0	0	0.00%	
07	0357	Ashby	33	28	31	33	34	0	8	8	24.24%	
07	0359	Milan	83	71	79	83	85	0	2	2	2.41%	
07	0375	Atwater	21	18	20	21	21	0	1	1	4.76%	
07	0378	Herman	30	26	29	30	31	0	2	2	6.67%	
07	0381	Eden Valley	29	25	28	29	30	0	1	1	3.45%	
07	0393	Hoffman	104	88	99	104	106	0	6	6	5.77%	
07	0420	Raymond	16	14	15	16	16	0	0	0	0.00%	
07	0426	Wendell	37	31	35	37	38	0	0	0	0.00%	
07	0430	Bird Island	18	15	17	18	18	0	0	0	0.00%	
07	0441	Bellingham	95	81	90	95	97	5	28	33	34.74%	
07	0457	Porter	78	66	74	78	80	0	2	2	2.56%	
07	0483	Dassel	15	13	14	15	15	0	1	1	6.67%	
07	0485	Clara City	33	28	31	33	34	0	0	0	0.00%	
07	0524	Saint Leo	33	28	31	33	34	0	0	0	0.00%	
07	0527	Millerville	15	13	14	15	15	0	0	0	0.00%	
07	0537	New London	36	31	34	36	37	0	6	6	16.67%	
07	0545	Spicer	148	126	141	148	151	0	30	30	20.27%	
07	0556	Wood Lake	90	77	86	90	92	0	1	1	1.11%	
07	0629	Chokio	20	17	19	20	20	0	0	0	0.00%	
07	0638	Westport	26	22	25	26	27	0	0	0	0.00%	
07 Total			2579					16	295	311	12.06%	
08	0060	Grand Rapids	89	76	85	89	91	0	12	12	13.48%	
08	0071	Duluth	299	254	284	299	305	0	41	41	13.71%	
08	0109	Two Harbors	95	81	90	95	97	3	29	32	33.68%	
08	0122	Deer River	28	24	27	28	29	0	3	3	10.71%	
08	0182	Effie	31	26	29	31	32	0	0	0	0.00%	
08	0222	Hibbing	45	38	43	45	46	0	2	2	4.44%	
08	0241	Aurora	85	72	81	85	87	0	2	2	2.35%	
08	0248	Ely	76	65	72	76	78	0	4	4	5.26%	
08	0262	Cloquet	66	56	63	66	67	0	19	19	28.79%	
08	0307	Nashwauk	49	42	47	49	50	0	3	3	6.12%	
08	0379	Moose Lake	28	24	27	28	29	1	28	29	103.57%	9/17/24

Dist	Unit	Unit Location	2025 DNO	Goal Dates Set By National				Junior	Senior	Total	Percent to Date	100%+ Date
				85% by 3/15/25	95% by 5/23/25	100% by 7/4/25	102% by 7/26/25					
08	0413	Grand Marais	49	42	47	49	50	2	14	16	32.65%	
08	0415	Barnum	15	13	14	15	15	0	2	2	13.33%	
08	0432	Warba	24	20	23	24	24	0	2	2	8.33%	
08	0452	Keewatin	32	27	30	32	33	0	1	1	3.13%	
08	0494	Big Falls	11	9	10	11	11	0	2	2	18.18%	
08	0499	Northome	27	23	26	27	28	0	1	1	3.70%	
08	0562	Brookston	11	9	10	11	11	0	0	0	0.00%	
08	0575	Goodland	16	14	15	16	16	0	0	0	0.00%	
08 Total			1076					6	165	171	15.89%	
09	0015	Detroit Lakes	139	118	132	139	142	2	30	32	23.02%	
09	0016	Bagley	190	162	181	190	194	0	3	3	1.58%	
09	0020	Crookston	105	89	100	105	107	4	23	27	25.71%	
09	0021	Moorhead	203	173	193	203	207	3	53	56	27.59%	
09	0022	Red Lake Falls	152	129	144	152	155	0	5	5	3.29%	
09	0024	Roseau	116	99	110	116	118	0	2	2	1.72%	
09	0025	Warroad	41	35	39	41	42	0	2	2	4.88%	
09	0027	Warren	163	139	155	163	166	9	72	81	49.69%	
09	0030	Fergus Falls	37	31	35	37	38	0	11	11	29.73%	
09	0031	Mahnomen	24	20	23	24	24	0	0	0	0.00%	
09	0035	Alvarado	58	49	55	58	59	0	0	0	0.00%	
09	0088	Greenbush	38	32	36	38	39	0	0	0	0.00%	
09	0114	Fosston	17	14	16	17	17	0	5	5	29.41%	
09	0117	Thief River Falls	204	173	194	204	208	0	9	9	4.41%	
09	0148	Dent	39	33	37	39	40	0	15	15	38.46%	
09	0153	Barnesville	94	80	89	94	96	0	12	12	12.77%	
09	0157	East Grand Forks	315	268	299	315	321	0	41	41	13.02%	
09	0159	Oklee	17	14	16	17	17	0	0	0	0.00%	
09	0162	Grygla	20	17	19	20	20	0	1	1	5.00%	
09	0181	Lake Park	17	14	16	17	17	0	1	1	5.88%	
09	0214	Lancaster	82	70	78	82	84	0	4	4	4.88%	
09	0238	Fertile	33	28	31	33	34	0	4	4	12.12%	
09	0242	Fisher	54	46	51	54	55	0	4	4	7.41%	
09	0256	Clearbrook	52	44	49	52	53	0	0	0	0.00%	
09	0283	Deer Creek	19	16	18	19	19	0	0	0	0.00%	
09	0304	Gonvick	49	42	47	49	50	0	2	2	4.08%	
09	0331	Oslo	27	23	26	27	28	0	0	0	0.00%	
09	0353	Argyle	109	93	104	109	111	0	2	2	1.83%	
09	0371	Roosevelt	34	29	32	34	35	0	0	0	0.00%	
09	0382	Hawley	27	23	26	27	28	0	13	13	48.15%	
09	0390	Stephen	18	15	17	18	18	0	0	0	0.00%	
09	0402	Halstad	6	5	6	6	6	0	0	0	0.00%	
09	0427	Newfolden	32	27	30	32	33	0	1	1	3.13%	
09	0431	Twin Valley	23	20	22	23	23	0	1	1	4.35%	
09	0434	Hendrum	12	10	11	12	12	0	0	0	0.00%	
09	0436	Waubun	34	29	32	34	35	0	1	1	2.94%	
09	0444	Middle River	135	115	128	135	138	0	2	2	1.48%	
09	0445	Karlstad	62	53	59	62	63	6	29	35	56.45%	
09	0466	Strandquist	13	11	12	13	13	0	0	0	0.00%	
09	0489	Underwood	39	33	37	39	40	0	13	13	33.33%	
09	0505	Gary	47	40	45	47	48	0	30	30	63.83%	
09	0603	Gully	19	16	18	19	19	0	0	0	0.00%	
09	0623	Plummer	29	25	28	29	30	0	4	4	13.79%	

Dist	Unit	Unit Location	2025 DNO	Goal Dates Set By National				Junior	Senior	Total	Percent to Date	100%+ Date
				85% by 3/15/25	95% by 5/23/25	100% by 7/4/25	102% by 7/26/25					
09 Total			2944					24	395	419	14.23%	
10	0051	Pine City	104	88	99	104	106	0	5	5	13.79%	
10	0083	Lindstrom	8	7	8	8	8	0	0	0	0.00%	
10	0085	North Branch	147	125	140	147	150	0	5	5	3.40%	
10	0093	Rush City	13	11	12	13	13	0	0	0	0.00%	
10	0102	Anoka	183	156	174	183	187	3	61	64	34.97%	
10	0118	Wayzata	193	164	183	193	197	0	23	23	11.92%	
10	0131	Maple Lake	75	64	71	75	77	0	1	1	1.33%	
10	0139	Harris	28	24	27	28	29	0	2	2	7.14%	
10	0145	Howard Lake	44	37	42	44	45	0	3	3	6.82%	
10	0151	Sandstone	23	20	22	23	23	0	1	1	4.35%	
10	0163	Willow River	23	20	22	23	23	0	0	0	0.00%	
10	0172	Osseo	240	204	228	240	245	8	124	132	55.00%	
10	0178	Milaca	105	89	100	105	107	0	11	11	10.48%	
10	0201	Mora	62	53	59	62	63	0	1	1	1.61%	
10	0209	Cokato	59	50	56	59	60	0	8	8	13.56%	
10	0216	Princeton	125	106	119	125	128	0	9	9	7.20%	
10	0259	Excelsior	120	102	114	120	122	1	15	16	13.33%	
10	0260	Monticello	199	169	189	199	203	0	40	40	20.10%	
10	0270	Buffalo	71	60	67	71	72	0	18	18	25.35%	
10	0282	St Louis Park	70	60	67	70	71	0	31	31	44.29%	
10	0290	Cambridge	67	57	64	67	68	2	10	12	17.91%	
10	0303	Fridley	142	121	135	142	145	4	18	22	15.49%	
10	0305	Waverly	53	45	50	53	54	0	1	1	1.89%	
10	0312	Stacy	6	5	6	6	6	0	0	0	0.00%	
10	0320	Hopkins	148	126	141	148	151	6	42	48	32.43%	
10	0323	Clearwater	60	51	57	60	61	0	1	1	1.67%	
10	0334	Coon Rapids	109	93	104	109	111	0	22	22	20.18%	
10	0347	Beroun	17	14	16	17	17	0	12	12	70.59%	
10	0377	Delano	87	74	83	87	89	0	21	21	24.14%	
10	0395	Onamia	58	49	55	58	59	0	21	21	36.21%	
10	0398	Mound	119	101	113	119	121	2	31	33	27.73%	
10	0514	Maple Plain	60	51	57	60	61	0	6	6	10.00%	
10	0523	Golden Valley	65	55	62	65	66	0	23	23	35.38%	
10	0550	Bloomington	105	89	100	105	107	0	25	25	23.81%	
10	0563	Bruno	18	15	17	18	18	0	0	0	0.00%	
10	0566	Lino Lakes	95	81	90	95	97	2	37	39	41.05%	
10	0567	Saint Michael	123	105	117	123	125	0	30	30	24.39%	
10	0600	Champlin	44	37	42	44	45	2	11	13	29.55%	
10	0622	Saint Francis	21	18	20	21	21	0	3	3	14.29%	
10	0630	Brooklyn Center	60	51	57	60	61	0	11	11	18.33%	
10	0640	Ogilvie	42	36	40	42	43	0	1	1	2.38%	
10 Total			3391					30	684	714	21.06%	
Grand Total			26045					250	4544	4794	18.41%	